

FLOOR PLANS

Moneta Springs

MEMORY CARE RESIDENCE



Moneta Springs is an innovative facility designed to create “home” for our residents with dementia. Specialized therapies which integrate innovative concepts including the use of pets, plants, and music therapy engage

and enrich the residents’ lives, providing a high quality of life and a high quality of care. The state-of-the-art facility is specially designed with front porches overlooking a vibrant Town Center.



Twin Lakes Community
3810 Heritage Drive
Burlington, NC 27215

(336) 585-2389
twinlakescomm.org

*Twin Lakes Community is a division of
Lutheran Retirement Ministries of
Alamance County, North Carolina*



Private Apartment

1 Bedroom / 1 Bath

Companion Apartment

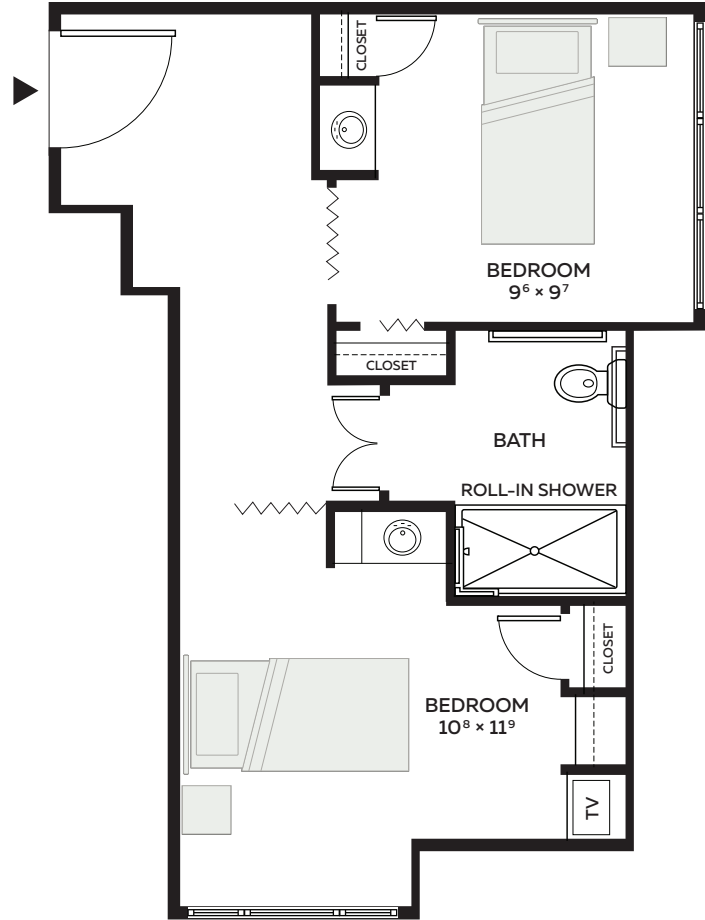
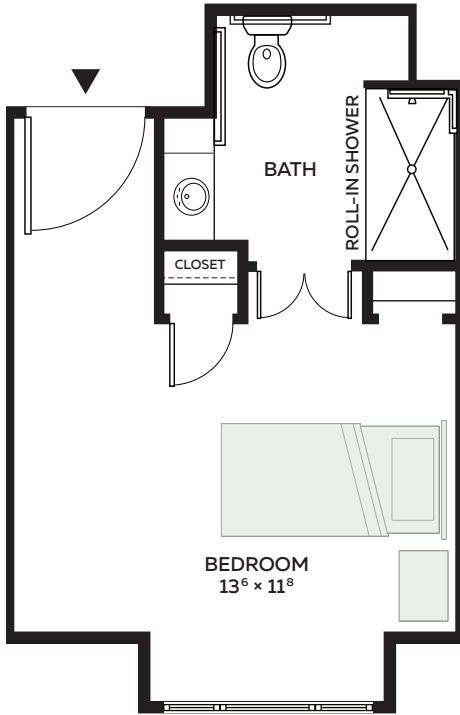
2 Bedroom / 1 Bath

Sandpiper Cove
Assisted Living Household

Ward's Landing
Skilled Nursing Household

Sandpiper Cove
Assisted Living Household

Ward's Landing
Skilled Nursing Household



| Rates for Moneta Springs Memory Care Sandpiper Cove Assisted Living Household | | Rates for Moneta Springs Memory Care Ward's Landing Skilled Nursing Household | |
|---|--------------------------------------|---|--------------------------------------|
| Sandpiper Cove PRIVATE APARTMENT | \$ 291 per day | Ward's Landing PRIVATE APARTMENT | \$ 301 per day |
| Sandpiper Cove COMPANION APARTMENT | \$ 281 per day <i>each person</i> | Ward's Landing COMPANION APARTMENT | \$ 291 per day <i>each person</i> |

Fees effective October 1, 2018 until future changes deemed appropriate by the Board of Lutheran Retirement Ministries of Alamance County.